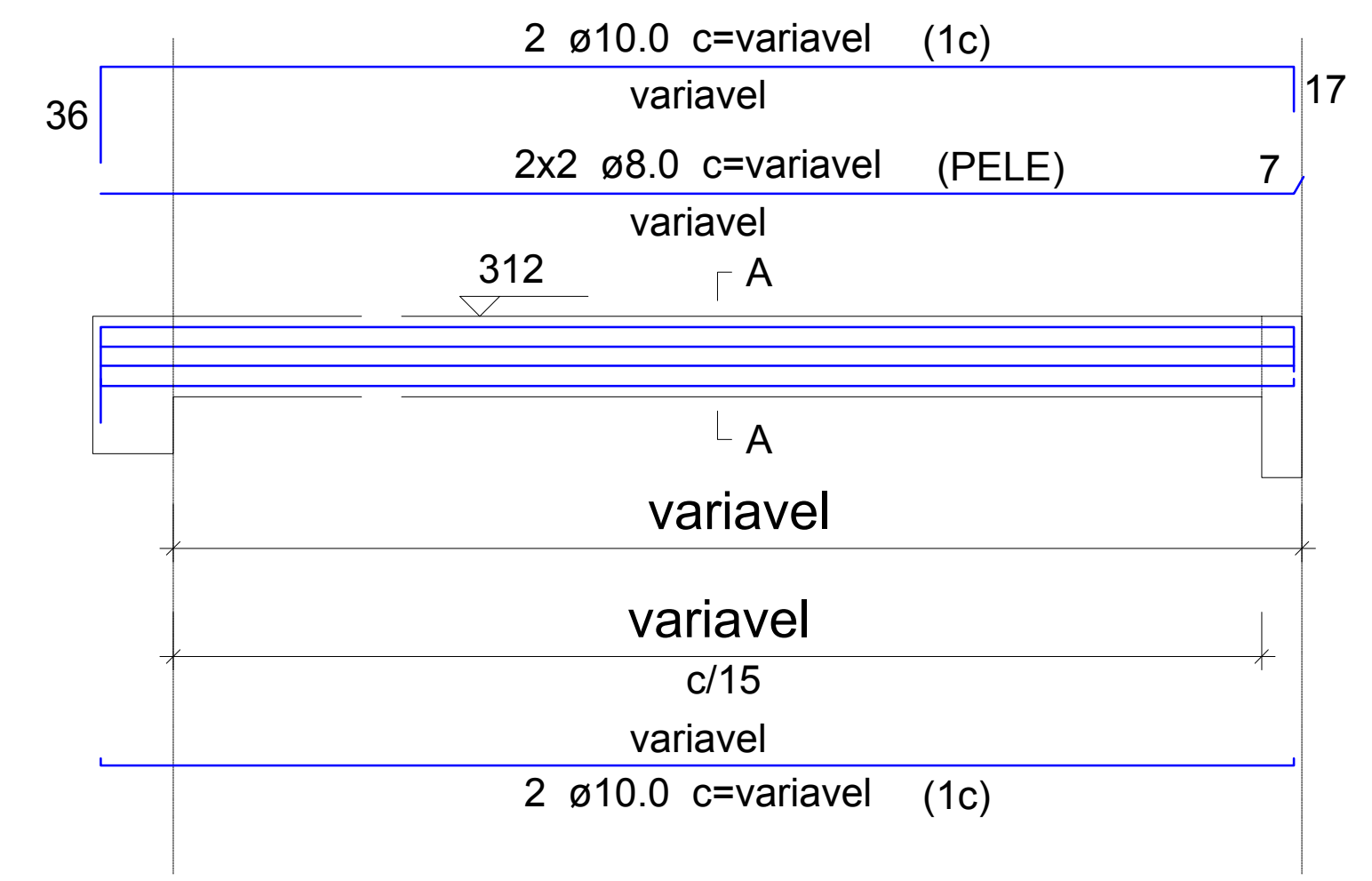
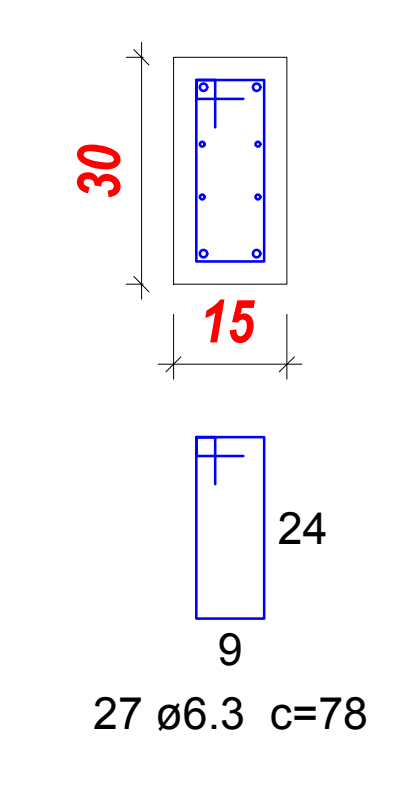


PROJETO LOCAÇÃO VIGA CINTA
ESCALA:.....1:100

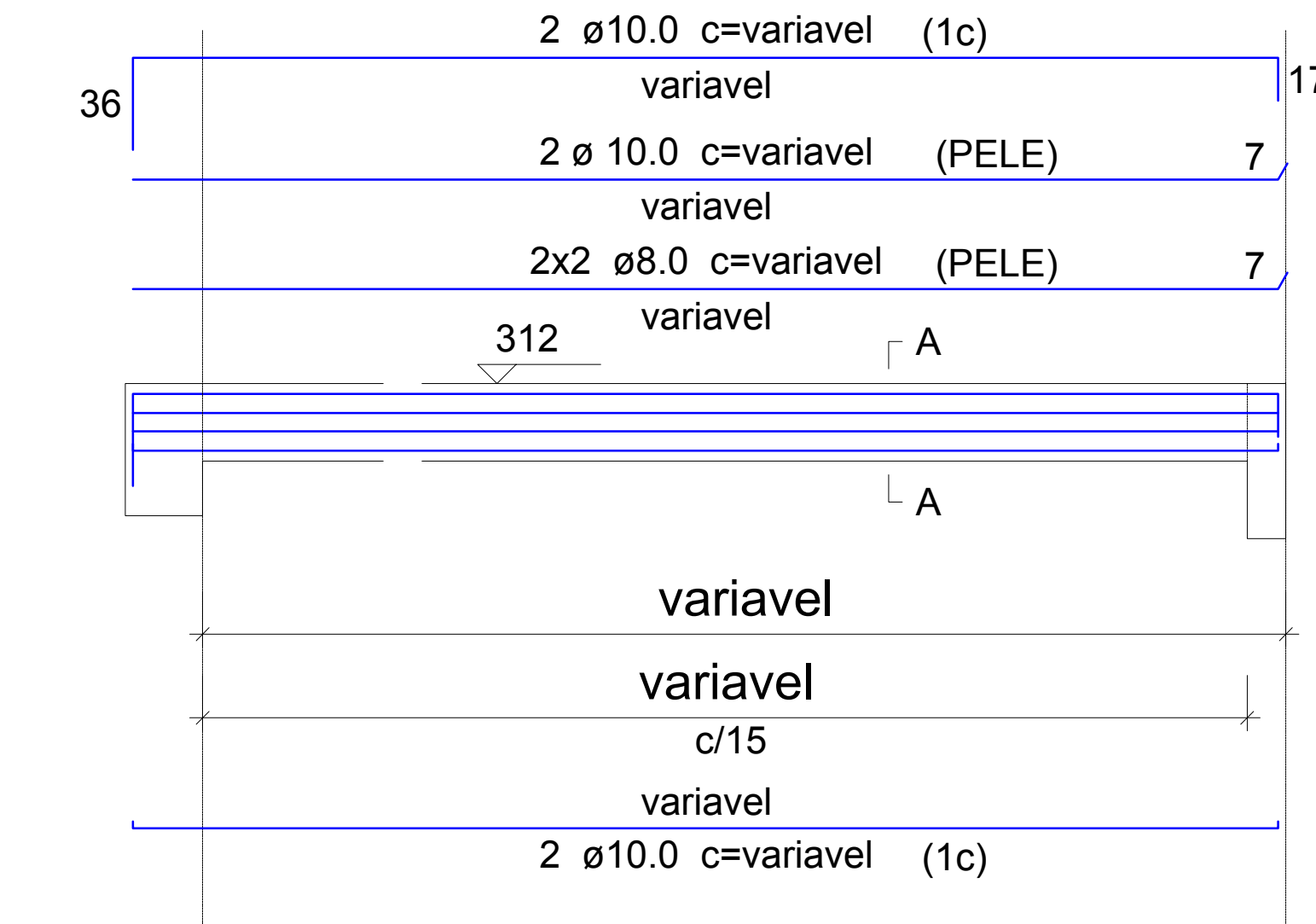
VC1 (15 x 30)
ESC 1:50



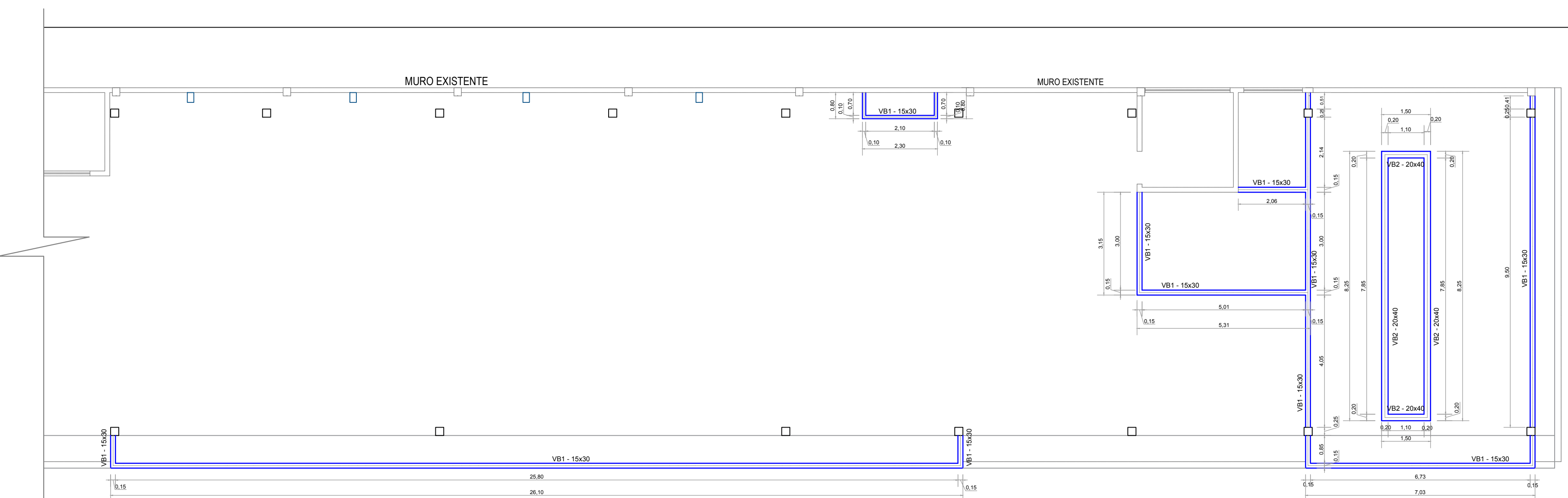
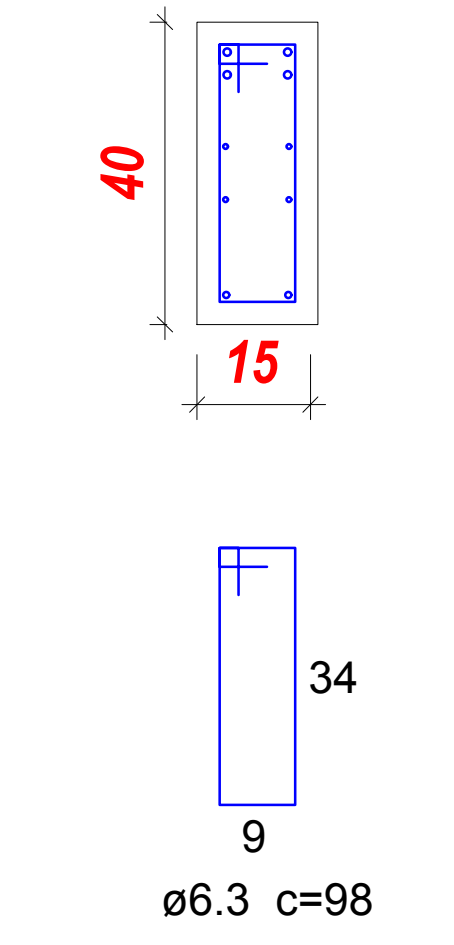
SEÇÃO A-A
ESC 1:20



VC2 (20 x 40)
ESC 1:50

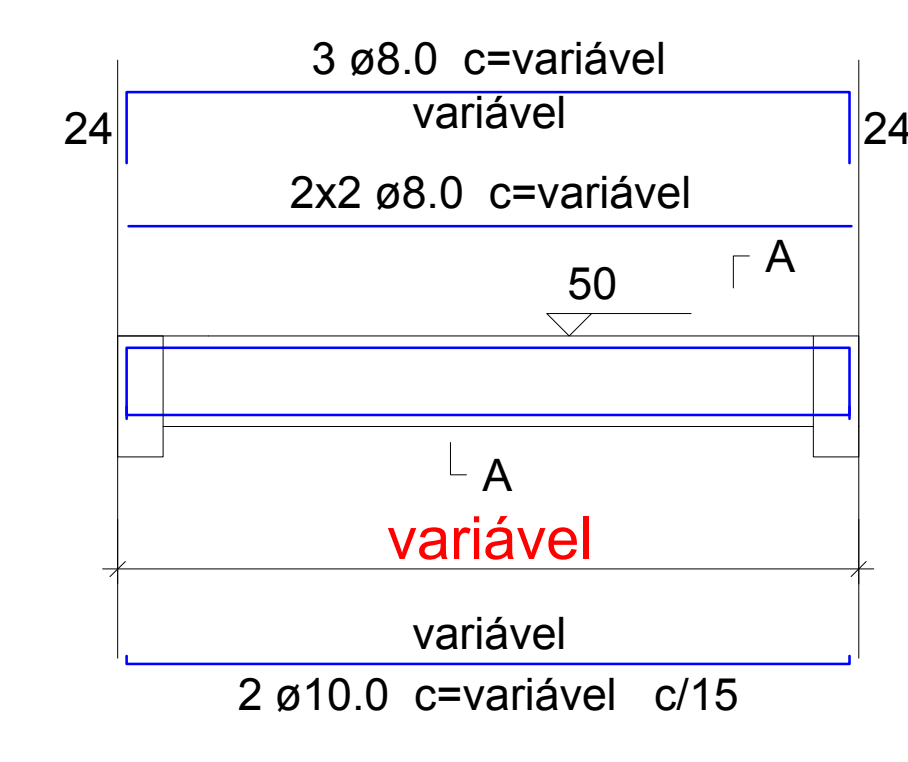


SEÇÃO A-A
ESC 1:20

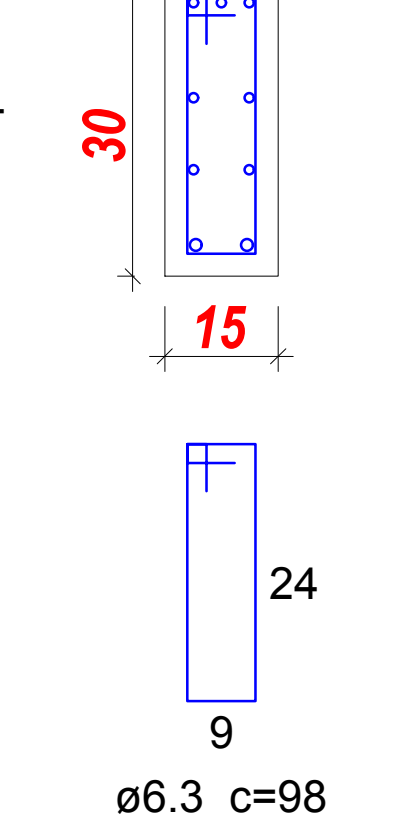


PROJETO LOCAÇÃO VIGA BALDRAME
ESCALA:.....1:100

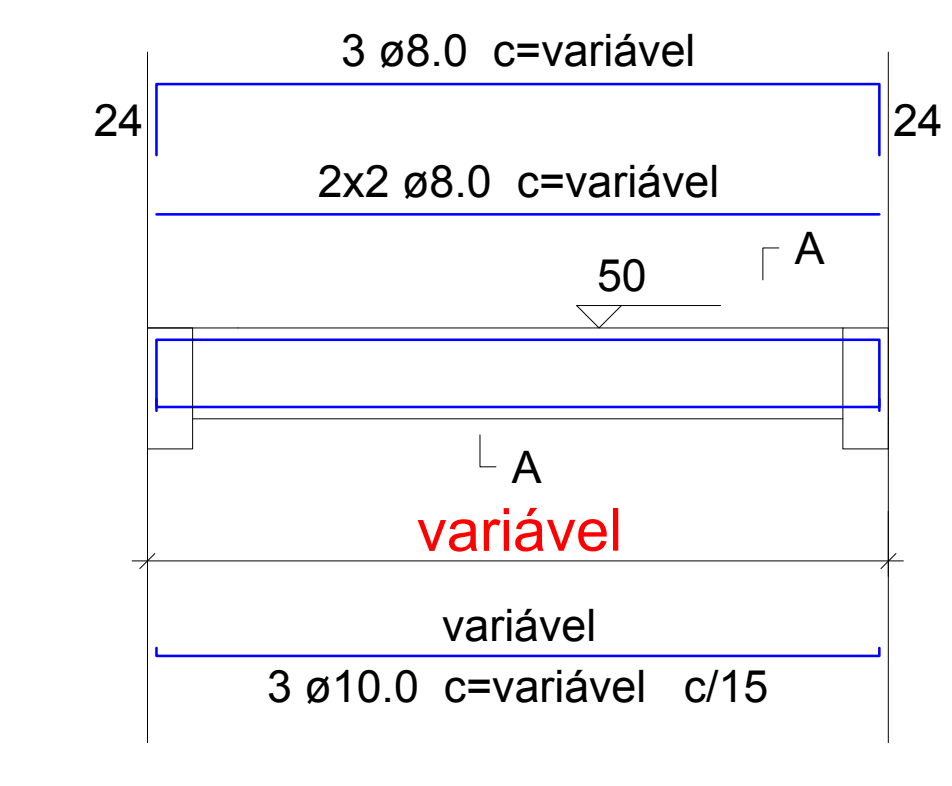
VB1 (15 x 30)
ESC 1:50



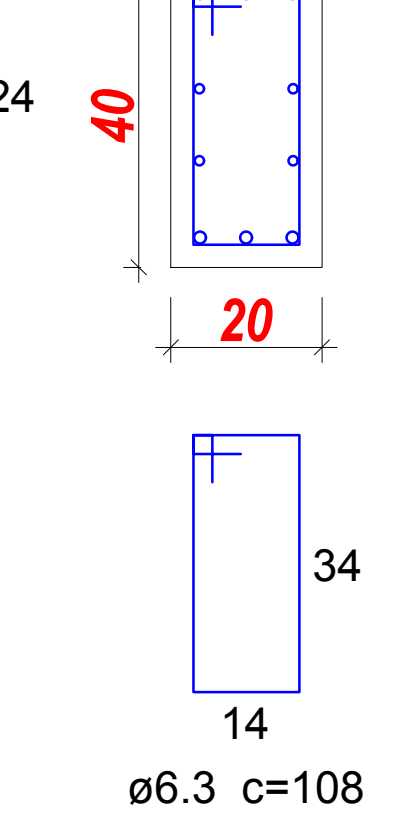
SEÇÃO A-A
ESC 1:20



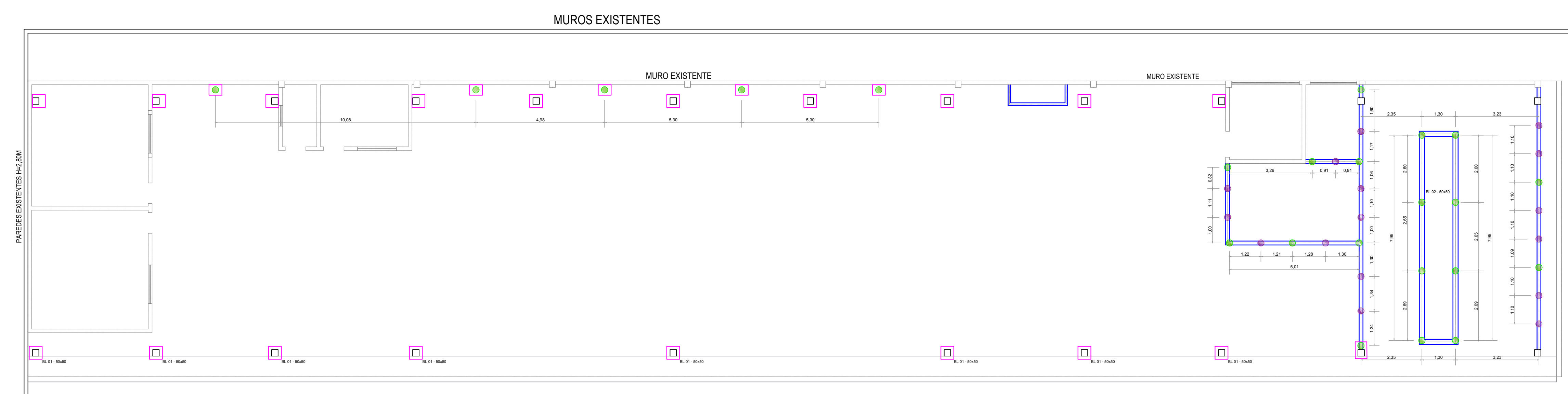
VB2 (20 x 40)
ESC 1:50



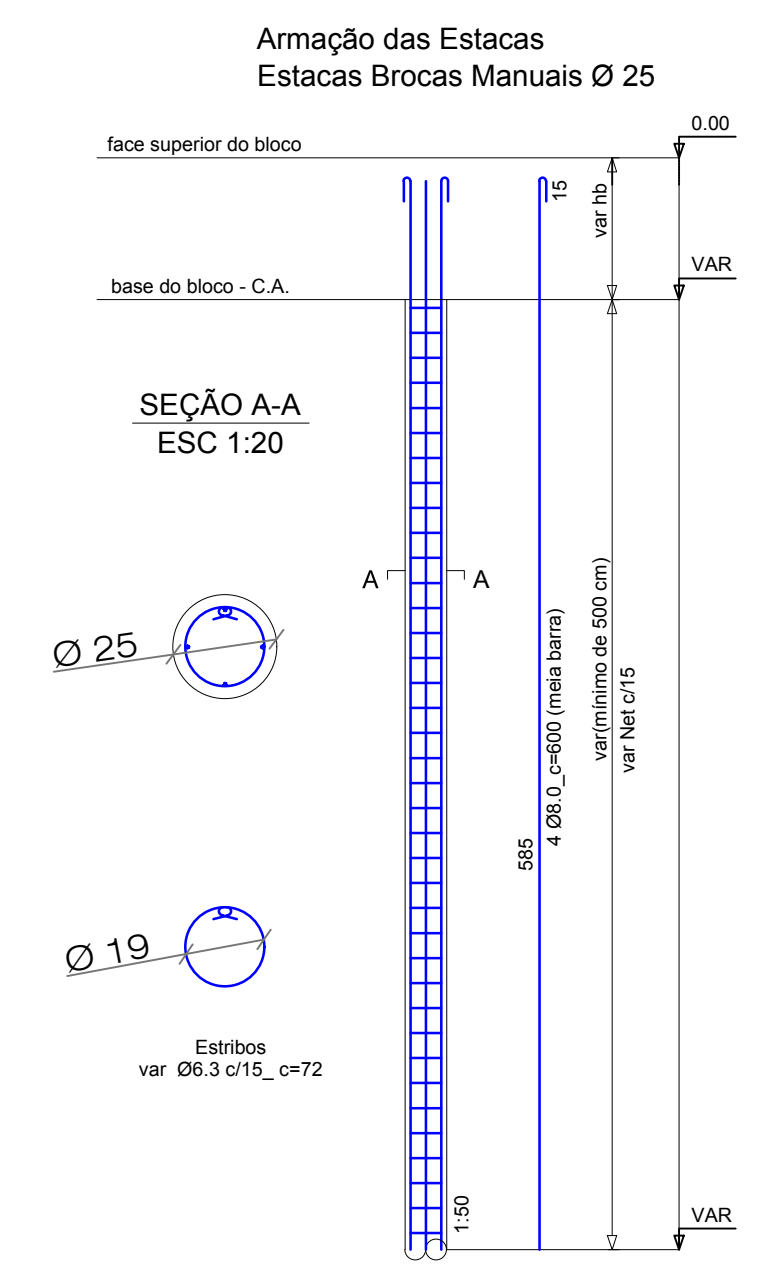
SEÇÃO A-A
ESC 1:20



CONVERSÃO DE FERRAGENS		
	POLEGADAS	MILÍMETROS
N2	3/16"	5,00
N3	1/4"	6,30
N4	5/16"	8,00
N5	3/8"	10,00
N6	1/2"	12,5
N7	5/8"	16,00
N8	3/4"	20,00



PROJETO LOCAÇÃO DAS ESTACAS
ESCALA:.....1:100



MUNICÍPIO DE PALMITAL

PROJETO ESTRUTURAL 01/02

PÁTIO DE MAQUINAS MUNICIPAL

Rua Moisés Lupion, esquina com Rua 21 de Janeiro - PALMITAL, PARANÁ

VIGA CINTA - VIGA BALDRAME - ESTACAS - DETALHES

Área total da edificação...623,02m²
Área total da Cobertura...680,70m²



Valdinei de Souza
Prefeito Municipal

SIMONE DE ANDRADE
Arquiteta e Urbanista CAU A45011-1

ARQ. Simone de Andrade INDICADA Palmital, 26 de Maio de 2020.

PRANCHA A1